



Alone we can do so little; together we can do so much.
-Helen Keller

Elvehjem Echo
Elvehjem Neighborhood Association
Founded March 1968
Vol. 52, Issue 4 August/September 2020
Our Association's 52nd Year



PRESIDENT'S LETTER



Dear Neighbors,

There are movements in history that are ethical and moral that become the responsibility of those with a voice to speak up.

The following is ENA's statement on social injustice and our plans to address it as an association, community, and as individuals. I hope you all will join us and continue this movement to better ourselves and bring equity to all of our neighbors.

Black Lives Matter.

At our June meeting, the Elvehjem Neighborhood Association board discussed the ongoing protests against racism and police brutality. We decided that we ought - and want - to do more to be actively inclusive and anti-racist.

We are looking at how we can better foster those ideas throughout our neighborhood and Facebook community, but we wanted to start with Elvehjem's namesake: Despite his achievements in academia and chemistry research, former UW-Madison President Conrad Elvehjem was a racist who advocated for segregated housing. We profoundly disagree with those ideas. We also recognize that this part of our history confers to us an obligation. We cannot simply say that we disagree. We must take action to right the wrong, by doing more to make this neighborhood a better and inclusive place to live for everyone.

Moving forward, this will be a core aspect of our mission as a board. To move from ideas to action, we are establishing a workgroup of residents committed to this work, and we will enact recommended actions from this group. We encourage neighbors who identify as persons of color to reach out to us and share experiences, feelings, and ideas - we want to listen. But we also acknowledge that it is not the obligation of our Black neighbors to provide us with this education, so we have also committed to connecting with - and supporting the work of - existing organizations and using the resources that are already available to us.

Finally, and significantly, we must recognize that our neighborhood does not have adequate non-white leadership representation. As a part of undoing Conrad Elvehjem's racist legacy, this must change. We will do what needs to be done to ensure that our neighborhood's diversity is properly represented in our leadership from 2020 forward.

Sincerely,
Charles Donaldson, ENA President
(651) 353-8523
charles@elvehjemneighborhood.org

MEMBERSHIP SIGNUP FORM

SIGN UP & PAY ONLINE IN 60 SECONDS!

➡ ➡ **theENA.org/join**

... or complete & return the form below



How would you like to receive your bimonthly *Echo* Newsletter: Email // Postal // Both

ADDRESS: _____ **PHONE:** (_____) _____ - _____

FIRST/LAST NAME: _____

EMAIL: _____

(RESIDENT 2, OPTIONAL): FIRST/LAST NAME _____

(RESIDENT 2, OPTIONAL): EMAIL _____

Dues are \$15 per year

Checks can be made payable to ENA.
Please return with membership form to:

ENA Membership
PO Box 14625
Madison, WI 53708-0625

YES, I'd like to support the Elvehjem
Neighborhood with an additional
donation! All sponsorship levels include
your \$15 annual dues.

*Amount \$ _____ Cash Check # _____

- PLATINUM Level Sponsorship \$100
- GOLD Level Sponsorship \$75
- SILVER Level Sponsorship \$50
- BRONZE Level Sponsorship \$25

Are you interested in volunteering for the neighborhood in 2020?

- YES, I will volunteer my time at one or more neighborhood events.
- YES, I am interested in serving as an ENA Board Member.

* Elvehjem Neighborhood Association is a 501(c)(3) nonprofit org. All membership dues & additional donations are tax deductible. All contact information will be used for bimonthly *Echo* Newsletter delivery, occasional email updates, and if applicable, volunteer correspondence. Joining ENA promotes a stronger, safer, and more connected community. Thank you in advance for your generous support.

Why join the Elvehjem Neighborhood Association?

Keep our tradition strong!

Elvehjem has the longest-running neighborhood association in Madison.

ENA is a 100% volunteer based organization that depends on the financial support of our neighborhood! Your \$15 annual membership dues support a wide range of valuable activities and services such as:

>> **Events for all ages:** Easter Egg Hunt, Garage Sales, Kindness Rock Painting, Fourth of July Celebration & Firecracker Races, Make Music Madison concerts, Park play-dates, Halloween Bonfires, 5K Turkey Trot & Walk, Holiday in the Park

>> **Neighborhood improvement:** Adopt-a-school, Annual Neighborhood Meeting & Membership Drive, Earth Day Clean-up, Neighborhood Night Out, Decorating Contests, ENA Welcome Sign and Garden Maintenance

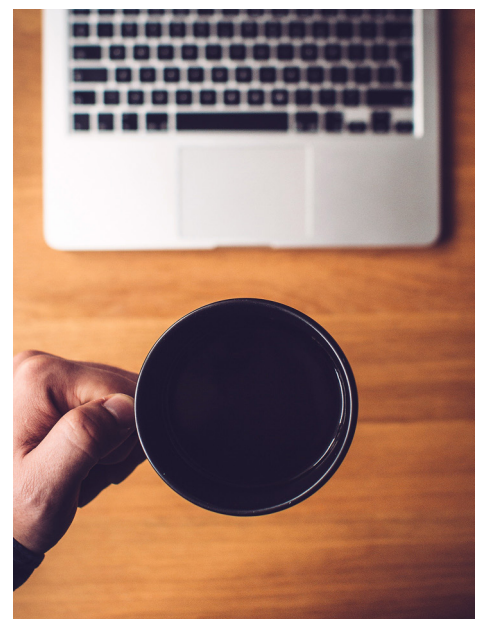
>> **Community building:** Foster relationships with local law enforcement, Good Neighbor Project, nearby neighborhood associations, and local businesses

>> **Communication:** Bimonthly Echo Newsletter, Website: theENA.org, Elvehjem Neighborhood Facebook Group: [theENA.org/fb](https://www.facebook.com/theENA.org/fb), E-mail Updates

Annual Meeting Recap – *The First Ever Online*

Virtual Annual Meeting 2020

On June 6th, we had our first, and hopefully only, virtual ENA Annual Meeting via Zoom. Past board members, along with long-term neighborhood volunteers, called in to meet quorum for the meeting. Elected officials also called in: Blaire Adkins – Dane County Board, Michael Tierney – District 16 Alder, and Representative Melissa Sargent. Kim Richman also called in with an update on behalf of the Good Neighbor Project. We discussed the 2019 Calendar of Events, including our highly successful 4th of July Celebration, and the first Holiday in the Park in Elvehjem Neighborhood at the Park. Due to COVID-19, our 2020 Events are much less active. However, we are being creative with an online membership drive, driveway monthly board meetings, and brainstorming safe ideas for Neighborhood Night Out and our Neighborhood Halloween Bonfires in October.



Thanks to all of you who logged on and here's to another great year as an association!

TREASURER'S REPORT

By Jacob Wright

In the last newsletter, Charles challenged us to get to 100 memberships as part of a matching-donation drive for the River Food Pantry. And neighbors, I am delighted to report that you delivered! As of the end of July, we now have 134 active memberships! That means \$1,000 donated to the River Food Pantry to help our neighbors in need during this unprecedented, challenging economic time. It also means a safe, sustained future for our Association to come back bigger and better than ever once the pandemic is behind us. I can't wait to meet you all at our in-person events as soon as we're able to safely hold them.

In light of the success of the last matching drive, let's do it again! If we get to 200 memberships, that will be another \$500 for the River Food Pantry. Let's get it done!

One other reminder from me: The Association will reimburse you for expenses related to socially distant block-party gatherings, and there is a template safety plan for these gatherings available on our website. If you're interested in taking advantage of this, please let me know. Sherven Drive did one for the 4th of July and it was very successful.

As always, be in touch with any questions.

jacob@elvehjemneighborhood.org



CALL FOR BOARD MEMBERS!

The Elvehjem Neighborhood Association is always looking for new voices on our Board of Directors. Join us! There are openings **right now**. Bring your ideas and leave your mark on our wonderful neighborhood events, communications, and charitable activities--and help to drive the social justice activities outlined in the President's Letter.



Relatedly, the ENA Board is forming a Social Justice workgroup to share ongoing ideas and put them into action. We need more voices in this workgroup.

Contact Charles Donaldson to get the ball rolling:
charles@elvehjemneighborhood.org

GOAT PICTURES!

Many of us rushed to see the goats and documented their cuteness. Below is a collage of your



NEW BOARD MEMBER!

Welcome Claire Koenig!

Claire and her husband Alex have lived in the neighborhood since 2017. Claire is a registered dietitian and has a Masters of Public Health from the University of Minnesota. She works with schools that operate lunch and breakfast programs through her part-time job as a Public Health Nutritionist for the State of Wisconsin Department of Public Instruction. Alex has a degree in Biological Systems Engineering from UW-Madison and is a project manager for Pieper Electric. They have two kids: Will (2) and Lucy (7 months), and a small blonde dog named Honeybee. Claire and family enjoy being outdoors, working on house and yard projects, taking walks and bike rides, and spending time with family and friends. Claire is looking forward to getting to better know her neighbors and contributing to the community in whatever way she can.



Contact at claire@elvehjemneighborhood.org

Are you a renter?

The Elvehjem Neighborhood Association likes to reserve space on our board for people who rent so that renters' interests are represented. Currently, there is no one occupying this space. So, if you are a renter, we would love to have your voice on the Board of Directors!



Contact Charles Donaldson for more information: charles@elvehjemneighborhood.org

SUMMERTIME

J A H M A X X P I U E U V F P Y Y U L E
 C P X T O L J S C A S E L B B U B C N L
 S O B F I R E F L Y A M A O T W N B E S
 G R H T A R V N U D W B L A W F W O F Z
 O H Y M O B A B U U B Q C T D G B P J S
 D W Q M B T X V A S D N E I R F V E W E
 T D S P N Z C I C W Z C S N L L L F M D
 O D B U B I C R C E N W J G B H K X N A
 H S S B G E N K Q E A O D Z C F L S M N
 S S A I D I A I S T C L L A B E S A B O
 O P T T L E U H E C X R E E F M U G K M
 C G E E Q A B R W O T B E Z M X P M U E
 A A Y H J C P C H R M E E A A R H O Y L
 N M J T A A L I F N K V K S M I E U Z J
 E P W J R J O I S U N S H I N E Y T D U
 R A B K E A O V O P E W I J V Y P J A V
 J F I X U Y P T F I N P F K G Y T Z J W
 F S W I M J U X K R W S C S D N D G G X
 V C M L G H B F I Q Z N D J V K B O P L
 F L O W E R S Y F Q E C O L C M H G P E

BEACH
 FIREFLY
 HOTDOGS
 LEMONADE
 SMORES
 SWEETCORN
 WATERPARK

BOATING
 FLOWERS
 ICECREAM
 PARTY
 SUNSHINE
 SWIM

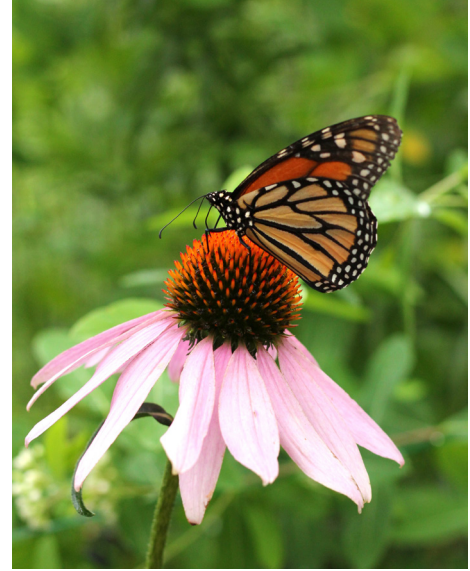
BASEBALL
 BUBBLES
 FRIENDS
 ICEDTEA
 POOL
 SUNTAN
 WATERMELON



RAISING MONARCH BUTTERFLIES!

Submitted by Jared Marker

We started raising Monarch caterpillars a few years ago when a neighbor stopped by to let us know they had found some on a milkweed plant and ask if we'd like to raise them – which of course we did. We keep them in a small, clear plastic container with a flat latticed lid (lots of air flow) intended for keeping bugs (approx. 8"x5" and 5" tall). The caterpillars start out very small of course, and the few that we've found ourselves were discovered on the underside of milkweed plant leaves. True to a famous story, they are indeed hungry, hungry caterpillars and will need fresh milkweed plant leaves almost daily. A wet paper towel as a layer on the bottom will help keep the leaves from drying out and make it easier to cleanup up the droppings. If you are looking for either caterpillars (starting in March or April) or food, there are plenty of milkweed plants growing at Elvehjem Elementary School. The caterpillars will grow, grow, grow, for about two weeks until they are ready for metamorphosis (Latin for "change form process"). Then they will attach themselves to the roof and begin to transform into a chrysalis (cocoons are for moths I've been informed), and after about 10 days they will emerge as butterflies. After a few hours to rest and dry its wings, it will begin to flap about the container and is ready to be released. We've raised about ten, and it is an exciting process to watch every time and a small joy to release them and watch them fly away.



FEATURED RECIPE: GRILLED SUMMER VEGETABLE SALAD

Submitted by Claire Koenig, adapted from eatingwell.com

Enjoy this healthy and simple grilled vegetable salad recipe alongside anything else you feel like throwing on the grill. Or toss it with pasta and plenty of Parmesan and call it dinner. If you don't have a grill rack, you can grill the peppers and zucchini on skewers and put the cobs of corn directly on the grill. Alternatively, you could chop all the vegetables, cut the corn off the cobs and put everything in tin foil packets on the grill.

Ingredients

- 2 ears corn, husked
- 2 large bell peppers, quartered
- 2 cups zucchini
- 3 tablespoons extra-virgin olive oil, divided
- ½ teaspoon salt
- ½ teaspoon ground pepper
- 1 tablespoon red-wine vinegar
- 2 tablespoons chopped fresh oregano

Directions

1. Preheat grill to medium-high.
2. Toss corn, peppers and zucchini with 2 tablespoons oil, salt and pepper in a large bowl.
3. Oil the grill rack. Grill the vegetables, turning often, until lightly charred and tender, about 6 minutes for the peppers and zucchini and about 8 minutes for the corn.
4. Coarsely chop the peppers into 1-inch pieces. Cut the zucchini in half. Cut the corn kernels from the cobs. Transfer the vegetables to a serving dish. Drizzle with vinegar and oregano and the remaining 1 tablespoon oil.



Support Local

Area businesses that will soon need your support as we slowly re-open.

Monona Grove Nursery School
Good Food Low Carb Café
Harley's Wine and Spirits
Slow Roll Cycles
A New Leaf
Anointed One
Badger Fitness
Buraka
Cost Cutters
Cottage Café
Crema Café
Cuco's
Culvers
Dairyland Family Restaurant
Dane County Farmers Market
David's Jamaican Cuisine
Eastside Veterinary Clinic
El Rancho Mexican Grill
Falbo Bros Pizzeria

Great Dane East
Heritage Bakery & Café
Inspire Barber and Beauty
Kingdom Restaurant
Lake Edge Seafood
MSCR
Mcgee's Chicken
Misty Mountain Games
Monona Farmers Market
Pinney Library
Red Lion Singapore Grill
ReStore East
Sal's Tomato Pies
Savi Cafe & Catering
The Cozy Home
Twisted Grounds
VFW Post 7591
The Realty Medics
Waters Edge Photography



Do you own or manage a local business?

The ENA Board is taking some time in this pause from usual activities to examine our yearly event & other expenditures and find opportunities to localize and diversify our spending. If you own or manage a business in or around Elvehjem, how can we help you? How could we involve you in future events, communications, or other activities? Let's talk!

Contact Jacob, our treasurer, with your ideas, or to be added to the list:
treasurer@elvehjemneighborhood.org

not everyone is safer at home.

Social and physical distancing can slow the spread of COVID-19, but they also increase isolation and danger for people who live with abusive and/or unsafe individuals. If you are in this situation, the below resources may help.

Domestic Abuse Intervention Services (Local)

www.abuseintervention.org

(608) 251-4445 (24/7)

Rape Crisis Center (Local)

www.thercc.org

(608) 251-7273 (24/7)

National Domestic Abuse Hotline (National)

www.thehotline.org

(800) 799-7233 (24/7)

Trans Lifeline's Peer Support Helpline (National)

www.translifeline.org

(877) 565-8860 (available from 9am to 3pm)

In an emergency situation, always dial 9-1-1.



Clean. Local. Sustainable.



Go green.

Power your home or business with solar energy from Madison Gas and Electric.

MGE is planning a new Shared Solar installation at Morey Field in Middleton. Join the program to get locally generated solar energy for your home or business. It's easy, affordable, and it helps grow renewable energy in our community.

Shared Solar—Make it your energy.

Visit energy2030together.com/SharedSolar to learn how to participate.

GS3291 4/19/2019

MGE
your community energy company



Elvehjem Neighborhood Association
P.O. Box 14625
Madison, Wisconsin 53708-0625

ENA CALENDAR OF EVENTS

Wednesday, August 5
ENA Board Meeting
7 - 9 pm
Driveway 22 Jaarsma Ct

Wednesday, September 2
ENA Board Meeting
7 - 9 pm
Location TBA at theENA.org/fb

Ongoing through 2020
Membership Drive
Neighborhood-Wide ONLINE and in this *Echo*

Tuesday, October 6
Neighborhood Night Out
Details TBD, dependent on *Safer at Home*
Email Jacob if you plan to host a gathering!
jacob@elvehjemneighborhood.org

Tuesday, October 6
ENA Board Meeting
Driveway 1633 Angel Crest Way

Tuesday, October 31
Halloween Bonfires
Details and map TBA

Membership Form Inside – Join the Association Today!