

# Elvehjem Echo

Elvehjem Neighborhood Association Founded March 1968  
Vol. 50, Issue 3 June/July 2018  
Our Association's 50th Year



*Dear Neighbors,*



I would like to formally introduce myself and my family. My name is Charles, and my lovely wife is Aubrey. We welcomed our first child, Ezra, to the world on Feb. 20th of this year. He seems to grow and change almost daily as we learn the ropes as new parents. We moved into this neighborhood back in 2012; buying a foreclosure, flipping it, and calling it our own. We fell in love with this neighborhood for its quiet nature, great location, even better school, but more importantly, the people. Dedicated neighbors and volunteers keep this neighborhood going and play a large role in what makes it special. I hope to keep this core to the community as we grow at a rapid pace and welcome new neighbors every day.

As a reminder, we just finished up the membership drive for this year. If you have not joined yet, please send in your membership form to our P.O. Box or online through PayPal. This drive is our many source of income for this year, funding the many events we hold in the neighborhood for 2018. As I take on this President's role, I hope to bring the neighborhood closer together through continued events and our big 50th anniversary celebration this fall. I also hope to fill the big shoes left by Jamie and continue making this neighborhood one of the leaders on the East Side. Please feel free to introduce yourself at future events or reach out to me directly before that to begin my tenure as President.

Sincerely,

*Charles Donaldson*

ENA President, 651-353-8523, [charles@elvehjemneighborhood.org](mailto:charles@elvehjemneighborhood.org)

## SECRETARY'S CORNER

by Audra Johnson



The 2018 - 2019 Elvehjem Neighborhood board gathered for a photo recently from left to right Jacob Wright Treasurer, Jim Ramsey Director at Large, Charles Donaldson President, Shane Corcoran Director at Large, Jared Marker Vice President, Audra Johnson Secretary, Crystal DeGrote Heppe Director at Large, Kim Bolinder Director at Large, Alice Pulvermacher Director at Large, and Marilee Cronin Director at Large. We're looking forward to an exciting year with all the 50th Anniversary activities to plan.

On page 7, you'll see a photo and a short bio of new board member Ted Perttunen who has recently re-joined the ENA board as a Director at Large. I can be reached [audra@elvehjemneighborhood.org](mailto:audra@elvehjemneighborhood.org)

# JR's Mulch Sales

Spread It Around  
692-BARK

Print a coupon at  
[www.jrsmulchsales.com](http://www.jrsmulchsales.com)

4230 Acker Road • Madison, WI 53704

## MEMBER CORNER

**WALKERS!** We meet at the front entrance of Elvehjem Elementary every Tuesday at 6:30. Power and Casual walkers, all ages welcome. We have a 30 minute and a 60 minute walk. Contact Chris Blechl, [chrisblechl@sbcglobal.net](mailto:chrisblechl@sbcglobal.net) or 334-2581

If you would like to put something in the Echo newsletter, write 40 words or less and email the notice to Audra Johnson [audra@elvehjemneighborhood.org](mailto:audra@elvehjemneighborhood.org)

## TREASURER REPORT

by Jacob Wright

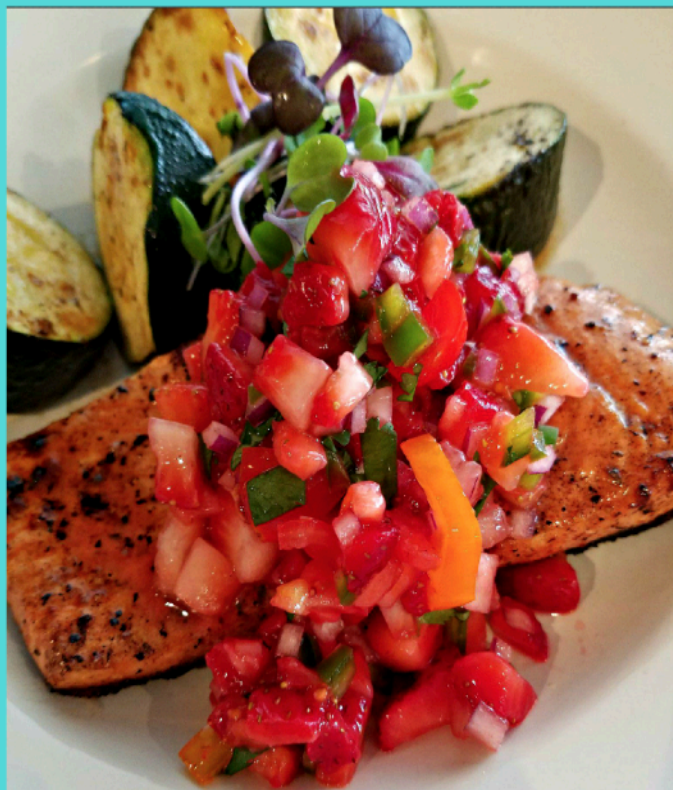


We're currently processing memberships and donations coming from the Annual Meeting and Membership Drive. If you haven't joined or renewed your membership yet, don't worry—there's still time! From our neighborhood association website ([elvehjemneighborhood.org](http://elvehjemneighborhood.org)), you

can join online and pay your dues via PayPal, or you can print a paper form and mail it in.

In other news: Did you know that there is yet another easy way to support the ENA if you shop Amazon? You can use Amazon Smile and choose to have Amazon donate to the Elvehjem Neighborhood Association with every purchase you make! There are links on our website to get going with this, as well. As always, don't hesitate to reach out with questions or concerns!

[jacob@elvehjemneighborhood.org](mailto:jacob@elvehjemneighborhood.org)



Good Food - Low Carb Cafe  
[goodfoodmadison.com](http://goodfoodmadison.com)



## Get a clear picture of your energy use

- See how your energy use compares to other nearby homes.
- See whether you've used more energy compared to last year.

Visit [mge.com/compare](http://mge.com/compare) and sign in to My Account for details.

Have questions? Call our Home Energy Line at 252-7117.



# UPCOMING ENA EVENTS



## ENA Neighborhood Garage Sales

Thursday June 14-Saturday June 16 from  
8am-4:00pm

If you are interested in participating, make sure to turn in your completed form found on [page 7](#) and \$5 registration fee by June 12! This will get your sale included on the neighborhood map with a list of addresses available on the ENA website and at registered sales as well as advertised in the Wisconsin State Journal, Craigslist, and Madison Stuff Exchange. A coordinated effort attracts more customers and supports your neighborhood! Get ready to get your thrift on!



**8:00am:** Kids Fun Run at Elvehjem Elementary. Calling all kids! Meet at the Elvehjem Elementary baseball diamond for our Kids Fun Run at 8:00am; all participants will receive a medal!

**8:30am:** Firecracker 5k/2 Mile Walk at Elvehjem Elementary. Join us in front of Elvehjem Elementary at 8:30am for the Firecracker 5k/2 Mile Walk; prizes for the first male and female to cross the finish line! Pre-registration is not required; simply show up at the starting line on race day! Race is free but a suggested donation of \$5 is appreciated to help offset the cost of insurance and other expenses.



**10:45am:** Bike Parade at Elvehjem Elementary. Decorate your bike, trike, stroller, wagon, or scooter in Red, White, and Blue and line up for the Bike Parade in front of Elvehjem Elementary at 10:45am. The parade will begin at 11am and the route will bring participants around to the Elvehjem Park shelter to start the celebration!

**11am:** Fourth of July Celebration at the Elvehjem Park Shelter!

We hope you can join us for a fun Independence Day Celebration including live music, free ice cream and soft drinks, raffle and silent auction, bounce house, face painting, and yard games. You are encouraged to bring your own picnic lunch! Winners of the raffle and silent auction will be announced at 1pm, you do not need to be present to win.

# ENA EVENT RECAP

## April 14 ENA Annual Meeting and Pizza Social

The annual meeting was another success. While the weather outside was cold and rainy, it was warm and full of community inside at Our Saviours Lutheran Church. Roughly 50 neighbors attending the meeting covering the last year in ENA. Doughnuts, coffee, and pizza was served as refreshments. A big thank you to Hyvee, Java Cat, and also Dominos pizza for their donations. Officer Dzick again gave the safety updated as this is her last year as Neighborhood Resource officer. She will be missed! The minutes covered the 2017 and 2018 calendar of events as well as meeting the new board.

## April 22 Earth Day Clean Up

Thank you to all of the neighbors who came out to help with the garlic mustard pull and Elvehjem Sanctuary trash clean up efforts on Earth Day. After a very late winter storm the prior week, it was finally a beautiful day to be outside. A special thank you to neighbor Joel Stone, who came up with a backup plan to clear brush behind the tennis courts after the weather prevented there being any garlic mustard to pull this year. If you weren't able to make it, we encourage you to pick up trash or pull garlic mustard throughout the year in the neighborhood, especially since we were unable to pull any in April.

## MSCR Summer Programs

Check out our classes at  
MSCR East,  
4620 Cottage Grove Rd  
**Dance • Sewing  
Arts & Enrichment  
Family Workshops  
Fitness & More!**  
Recreation for all ages.



For a complete list of activities & camps see the  
Summer 2018 Program Guide or  
go to [mscr.org](http://mscr.org) for more information.

608-204-3000



MADISON SCHOOL & COMMUNITY RECREATION



**Waters  
EDGE**  
PHOTOGRAPHY



PORTRAITS  
REAL ESTATE  
EVENTS

LOCAL. AFFORDABLE.  
Contact Jo Mercurio at  
[jcm.watersedge@gmail.com](mailto:jcm.watersedge@gmail.com)  
or visit  
[watersedgephoto.com](http://watersedgephoto.com)

**10% Off Your Next Purchase  
With This Ad**



Harley's Liquor and Bait  
3838 Atwood Ave.  
(608)222-7941

Harley's Wine & Spirits  
4521 Cottage Grove Rd.  
(608)665-3305

[harleysliquorandbait.com](http://harleysliquorandbait.com)

# 50TH ANNIVERSARY UPDATE



## 2018 marks the 50th Anniversary of the Elvehjem Neighborhood Association!

The 50th Anniversary Committee is finishing up a documentary to highlight the first 50 years and the ENA is organizing a celebration to debut the video and celebrate our anniversary!

We are still in search of home videos and photos that show the Elvehjem Neighborhood as it's evolved! If you have any old photos or videos (we can convert just about any format!), please contact Marilee Cronin,

[Marilee@elvehjemneighborhood.org](mailto:Marilee@elvehjemneighborhood.org) with questions.

## 50th Anniversary Celebration !!

**Save the date: Saturday, September 29, 2018**

**Time: 11 a.m. – 3 p.m.**

- Program will begin at 11 a.m. to debut an Elvehjem neighborhood historical documentary.
- Music, games, food and drink to begin at noon.

Location: Our Saviour's Lutheran Church on Droster Rd.

We are busy planning activities for the day. One thing is for certain, our neighborhood documentary will be a signature feature at the event.

## Join us in planning ENAs 50th Anniversary celebration!

Recruiting Subcommittee Members

- We meet the third Monday of the month from June to September 7-8:30 p.m. at Our Saviour's Church on Droster Rd.
- Childcare is provided while we meet
- Activities and program to be planned by the subcommittee and approved by the ENA Board

If you are interested in being involved but can't make the meeting contact Alice Pulvermacher at [alice@elvehjemneighborhood.org](mailto:alice@elvehjemneighborhood.org)

## Thank you to our Community Partners and neighbors!

We are very lucky to be surrounded by generous and supportive community partners. Thank you to Wildwood Family Clinic, Central Storage Warehouse, Our Saviour's Lutheran church, and Culver's for donating to our project and celebration.

If you haven't yet, please consider pledging \$1 for every year you lived in the Elvehjem Neighborhood. Please go to [www.elvehjemneighborhood.org/celebration](http://www.elvehjemneighborhood.org/celebration) to donate via PayPal, or mail a check to the ENA, Attn: 50th Anniversary, PO Box 14625 Madison, WI 53708.

## Grant sponsored by :

- MG&E Foundation
- City of Madison Neighborhood Grant Program

# Monona Grove Nursery School Happy 60<sup>th</sup> Anniversary!

Enroll Now for Fall 2018 and  
Be a part of our 60th Year!  
Programs for ages 0-5 Since 1958!

Morning & Afternoon Classes

Join today! MMSD 4K • Preschool • Toddler Time (0-3)  
State Licensed & Accredited Parent Coop



Online at: **MGNS.org**

Call today!

608-222-4633

a *perfect* place to learn and *play*

Visit [www.MGNS.org](http://www.MGNS.org) for more information. Located at 4200 Buckeye Rd. Madison.

## *selling a home?*

**Stocks: Sell when they are high and buy when they are low.**

**Real Estate: It's complicated. Call the Pure Integrity Homes Team, your experienced neighborhood professionals, to help navigate a challenging market.**



PURE INTEGRITY HOMES • [INFO@PUREINTEGRITYHOMES.COM](mailto:INFO@PUREINTEGRITYHOMES.COM) • 608-588-6692

# ELVEHJEM NEIGHBORHOOD GARAGE SALE JUNE 14-16, 2018

## \*\*\*\*\*SIGN UP FORM\*\*\*\*\*

### For only \$5 you benefit from:

- \* Your sale on the neighborhood map and a listing of your address with any special items
- \* Advertising in the Wisconsin State Journal, Cragislist, and Madison Stuff Exchange
- \* Map and Sale lists to hand out to your customers with the other sales in the neighborhood.
- \* Map and sale list posted on the Elvehjem Neighborhood website
- \* A coordinated effort that attracts more customers and supports your neighborhood!

Complete this form and return it with \$5.00 to Diana Winter 1606 Deerwood Dr. Madison WI 53716. Phone 222-1994. Make checks payable to Elvehjem Neighborhood Association. ***Sign up deadline is June 10***

Advertised times are 8am - 4pm. Thursday June 14, Friday June 15, and Saturday June 16. Please feel free to set your own hours and note them below.

Your Name: \_\_\_\_\_ Phone: \_\_\_\_\_

Your Address: \_\_\_\_\_ Email: \_\_\_\_\_

Specific items you want mentioned in the sale: \_\_\_\_\_

\_\_\_\_\_ Days/Hours of your sale: \_\_\_\_\_

Would you like St. Vincent DePaul to pick up what is left over from the sale: Yes No



### **DIRECTOR AT LARGE RE-JOINS THE BOARD**

Hello, my name is Ted Perttunen, my family and I moved to the Elvehjem neighborhood in 1995. My wife Melanie and I have been married 33 years, we have four children and recently welcomed grandchild number three, all who continue to live in the Madison area.

I have decided to rejoin the Elvehjem Neighborhood Association (ENA) as the Donations Coordinator Board Member At Large as I enjoyed being the Donation Coordinator from 2010 to 2014. I look forward to continually developing relationships with local businesses to assist us in making our neighborhood a better place to live through donations, sponsorships, fundraising, and volunteering for our ENA events throughout the year. If anyone in our neighborhood wants me to contact their place of work to inquire if they would like to help our neighborhood in some way; please feel free to contact me or one of the other board members.

[ted@elvehjemneighborhood.org](mailto:ted@elvehjemneighborhood.org)

### **ELVEHJEM COMMUNITY LAWNMOWER CONTACT LIST**

**Brandon's Green Space Lawn  
Mowing, Brandon Sloan**

608-216-1716

**Gabe Murphy 608-770-2241**

**David's Lawn Care, David Martinez**

920-728-3811

**D&D Lawn Care, Dawson Dutcher**

608-220-7537



**Elvehjem Neighborhood Association**  
**P.O. Box 14625**  
**Madison, Wisconsin**  
**53708-0625**

**ENA Calendar of Events- Mark your calendars!!!**

<b><u>Date</u></b>	<b><u>Event</u></b>	<b><u>Time</u></b>	<b><u>Location</u></b>
June 14-16	ENA Neighborhood Garage Sales	8am-4pm(times vary)	Neighborhood wide
July 4	Fourth of July Celebration	11am-1:30pm	Elvehjem Park 1202 Painted Post
August 7	Neighborhood Night Out	All day	Throughout Neighborhood
Sept. 29	50th Anniversary Celebration	11am-3pm	Our Saviour's Church 1201 Droster Rd.