



Elvehjem Neighborhood Association

Alone we can do so little; together we can do so much.
-Helen Keller

Elvehjem Echo
Elvehjem Neighborhood Association
Founded March 1968
Vol. 52, Issue 2 April/May 2020
Our Association's 52nd Year



PRESIDENT'S LETTER



Dear Neighbors,

The state of our community, and larger, our country and world, has changed drastically since the last *Echo* edition. The COVID-19 virus has spread all the way to Wisconsin, causing major changes for our day to day life. This truly is uncharted waters for everyone involved, including our neighborhood. For specific ENA events, we will be changing our events to later in the year or canceling them altogether. Please see page 2 for the details and specific changes to upcoming events.

During these uncertain times it is important now more than ever that we rely on the strengths of our community. Connect with your neighbors, focusing on those closest to you as well as through our FB group online. Check in to ask if they need groceries or someone to talk to during these stressful times. There may be a couple that is forced to work from home

now, or a neighbor who can no longer leave their house. Now is the time to reach out and help. These tough times are when strong communities like ours shine.

I have been incredibly proud of the way we have responded so far. A neighbor put together a "Shamrock Hunt" throughout the eastside neighborhoods, with neighbors helping a 5 year old boy celebrate his birthday by finding shamrocks in the house windows. Jacob Wright, our treasurer, also started East Side Scrabble building off this same idea. People put letters in their window, allowing those walking by to create words and participate in a neighborhood wide game of scrabble. There have been numerous posts online for people volunteering to cook a meal, make a run to the grocery store, or support small businesses by buying meals or gift cards. This is what this neighborhood is all about, responding to adversity with community building solutions.

For those who are not online, this *Echo* is a chance to connect. I am offering up my email and phone number below to serve as a link to those resources. If you need anything—groceries, meals, or someone to talk to—please reach out to me. I will help, or I will direct you to those who can help online. These times may be uncertain, but the strength of our neighborhood will get us through them.

Sincerely,

Charles Donaldson

ENA President,

(651) 353-8523

charles@elvehjemneighborhood.org

CHANGES TO EVENTS

Easter Egg Hunt

CANCELED

Due to Governor Evers and the Wisconsin Department of Health Services declaring a "Safer at Home" order until 4/24, we're sad to have to cancel our annual Easter Egg Hunt at Droster Park. In lieu of this event, perhaps we can all share photos from our "at home" egg dyes, hunts, and candy binges to the neighborhood Facebook page: [theENA.org/fb](https://www.facebook.com/theENA.org/fb)

Annual Meeting & Membership Drive

Saturday, May 2 at 10am

Our Saviour's Lutheran, 1201 Droster Rd

The date has changed and we will now be having our Annual Meeting on May 2nd. We're preparing for online support in the event that gatherings of this nature are still discouraged. The online **Membership Drive is officially ongoing at theENA.org/join** - we're planning to have block captains knock on doors to hand out membership packets between May 2-July 4 but this is also flexible due to uncertainty around COVID-19.

Earth Day Parks Clean-up

Sunday, April 19 at 1pm

Elvehjem-area Parks

Normally for Earth Day we coordinate a garlic mustard pull and trash pickup, but this year due to uncertainty around leadership and availability we're shifting this to a totally community-lead effort to clean up our local parks. So on Sunday, 4/19 go to your nearest park(s) with garbage bags and gloves and let's beautify our surroundings! (Appropriately distanced, of course.) Fresh air sounds nice, doesn't it?

COVID-19 RESOURCES

Online — theENA.org/coronavirus

For our readers with internet access, we've curated and are maintaining a list of local and global resources with advice and assistance from health organizations and local groups.

Offline

Like many of us, you're probably relatively current with the news, but in the event that you need more you can call the WI Dept of Health Services at (608) 266-1865 or the Center for Disease Control at 800-232-4636. Per the World Health Organization, the goal is to slow down the spread which means regular hand-washing, social distancing as much as possible, and strictly quarantining if/when symptoms arise (unless you exhibit severe symptoms such as fever or shortness-of-breath, in which event seek immediate medical attention). Be smart and safe, neighbors!

CALLING WOODWORKERS!



If you've driven west on Buckeye Road at Thompson, just after the Interstate, you may have noticed that our neighborhood sign has been clipped on the top. We don't know exactly when or how this happened, but it's something that we'd like to fix!

Do you know any **local, experienced woodworkers** that would like to help us either repair the broken sign to look like the other two in the neighborhood or rebuild it entirely? Email us if you can help!:

enaboard@elvehjemneighborhood.org

TREASURER'S REPORT

By Jacob Wright



When I joined the board as Treasurer, I didn't see myself organizing events like Socially Distant Scrabble and Animal Safari Window Scavenger Hunt, but here we are—and I have felt so fortunate to live in a neighborhood that has found ways to come together however we can in these times. I want to sincerely thank everyone who has been participating in these events—they have made this an immeasurably better experience, particularly for our children, as they cope with not having school or seeing their friends.

I remain committed to helping our neighborhood through whatever comes next, and I hope you'll continue your support of our work through membership.

jacob@elvehjemneighborhood.org

SECRETARY'S CORNER



By Kim Bolinder

I hope everyone is looking forward to spring in our neighborhood! I have some board election news to share. In March, the ENA board re-elected the following executive team for '20-21 which will be instated at the Annual Meeting on May

2nd. President Charles Donaldson, Vice President Jared Marker, Treasurer Jacob Wright, and Secretary Kim Bolinder. We have openings for Director-at-Large positions so reach out to us at ENABoard@elvehjemneighborhood.org, if interested.

Did you know ENA maintains a babysitter list? We're in the process of updating it for our new website. For updates & additions please send the name, age, parent(s) name, phone and or email, and experience to babysitter@elvehjemneighborhood.org.

You may contact me at: kim@elvehjemneighborhood.org.

PINNEY LIBRARY GALA RECAP



The ENA Board drew a winner from 2019's association members and Linda Coelho (pictured) was selected to attend the Pinney Library Grand

Opening Gala on February 29th. Her report:

I was so excited to be the winner of two tickets to the Pinney library Gala from the neighborhood membership drawing this year.

I invited my friend Lesley Crocker to attend. It was very well attended. Everyone was dressed up for the evening and listened to good music and enjoyed a glass of wine.

The food was provided by Buck & Honey's with appetizers from assorted caterers. Some very tasty Italian food from Bunky's and even pizza from Ian's. Yum.

We really enjoyed having a sneak peek at the beautiful interior and the terrific resources that will be available for all to use.

2020 ANNUAL MEETING & MEMBERSHIP DRIVE

ANNUAL MEETING

Saturday, May 2 at 10am

Our Saviour's Lutheran, 1201 Droster Rd

All residents of Elvehjem Neighborhood are invited and encouraged to attend! Meet the ENA Board of Directors, vote on the 2020 budget, learn about neighborhood events and initiatives, and have the opportunity to join or renew your annual membership dues at a special reduced rate of \$12! Donuts generously from Hy-Vee and coffee will be provided. After the business portion of the meeting, stick around to enjoy delicious pizzas generously donated by Domino's while visiting with neighbors during our social hour from 11-noon.

Special guests will include MPD Neighborhood Resource Officer Howard Payne and Alder Michael Tierney. For those who cannot attend the in person meeting, we will host a virtual event invite through Facebook Live on the neighborhood website. More details and updates at theENA.org/fb.

MEMBERSHIP DRIVE

Saturday, May 2 - Saturday, July 4

It's time to show ENA your support by joining the Association or renewing your membership for 2020! A friendly neighborhood block captain will be stopping by your house between May 2nd and July 4th with our 2020 calendar of events, helpful local contacts, ways you can stay connected and get involved in the neighborhood, and of course a membership form with a pre-addressed envelope.

If you want to save a stamp, we're encouraging neighbors to sign up online and pay securely at theENA.org/join. Your tax deductible membership dues are just \$15 for the year for the entire household! As an added incentive to join promptly, all households who register by July 4th will be entered in a drawing for a chance to win a prize at a later date. If you'd like, you can scan the code with the camera app on your phone to quickly navigate to the signup page.



Good Food - Low Carb Cafe



keto-friendly cafe, food carts, and catering
4674 Cottage Grove Rd
(608) 630-8400
goodfoodmadison.com

MSCR Summer Programs

Check out our classes at
MSCR East,
4620 Cottage Grove Rd
**Dance • Sewing
Arts & Enrichment
Family Workshops
Fitness & More!**
Recreation for all ages.
Fee Assistance Available.



For a complete list of activities & camps see the
Summer 2020 Program Guide or
go to mscr.org for more information.


MADISON SCHOOL & COMMUNITY RECREATION

608-204-3000



Our mission is to
help make your bicycle ride
AWESOME.

We are a family owned bicycle
shop with the largest selection
of GIANT and LIV bicycles
in the area.

- Ebikes for you to test ride
- Full service shop with 40+ years of experience
- Servicing any make or model of bicycle

Stop by!
We would love
to see you.

4118 Monona Dr
Madison, WI 53716
608-286-1176
www.slowrollcycles.com
info@slowrollcycles.com



2020 Calendar of Events



The Elvehjem Neighborhood Association (ENA) Board meets the **first Wednesday** of the month from 7-9pm at Great Dane Eastside. All neighbors are welcome to attend! Please email president@elvehjemneighborhood.org to confirm meeting time and location.

DATE	EVENT	TIME	LOCATION
February	Classroom Restock Drive for LVM Elementary	Deliver donations to collection box inside LVM front entrance	
[CANCELED]	Easter Egg Hunt	[CANCELED]	Droster Park, 1429 Droster Rd.
Apr 1-May 31 May 2-July 4**	ONLINE: Elvehjem Neighborhood Association Spring Membership Drive IN-PERSON: Elvehjem Neighborhood Association Spring Membership Drive		
Sat, May 2**	Block Captain Training Meeting Annual Neighborhood Meeting Neighborhood Social and lunch	9:15-9:45am 10-11am 11am-12noon	Our Saviour's Lutheran Church 1201 Droster Rd
Sun, April 19	Earth Day Clean-up & Garlic Mustard Pull	1:00pm	Elvehjem Park, 1202 Painted Post Dr.
Thurs-Sat, June 11-13	Neighborhood Garage Sales	8am-4pm	See map for locations
Sat, July 4	Kids Fun Run & Firecracker 5K Bike Parade Fourth of July Celebration	8:00 & 8:30 am 11:00 am 11:00 am-1 pm	Elvehjem Elementary, 5106 Academy Dr. Our Saviour's Lutheran Church, 1201 Droster Rd.
Tues, August 4	Neighborhood Night Out	Various activities all day	Elvehjem Neighborhood *Will include map with neighbors hosting events in driveways
Sat, October 31	Neighborhood Halloween Bonfire	6-8pm	Elvehjem Neighborhood See map for bonfire locations across neighborhood
Thurs, Nov 26	5K Turkey Trot & 2-Mile Walk	8:30am SHARP	Droster Park, 1429 Droster Rd.
November- December	LVM Elementary Hats and Mittens Drive and Negative Lunch Accounts	Deliver donations to collection box inside LVM front entrance	
Sat, December 5*	Holiday in the Park	4-7 pm	*Elvehjem Park, 1202 Painted Post Dr

* Changes for events in 2020

** May be effected by COVID-19 outbreak, get the latest at theENA.org/events.

Additional events may be added throughout the year. Check theENA.org for full event details.

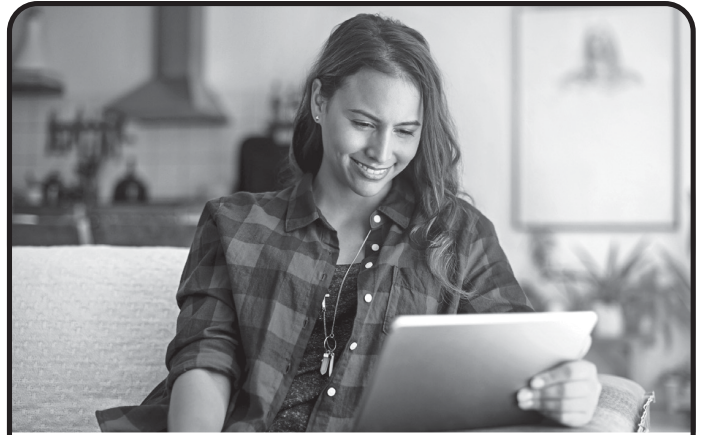
**10% Off Your Next Purchase
With This Ad**



Harley's Liquor and Bait
3838 Atwood Ave.
(608) 222-7941

Harley's Wine & Spirits
4521 Cottage Grove Rd.
(608) 665-3305

harleysliquorandbait.com



Want to save energy?

Make *mge.com* your first stop

- Get easy, low-cost ways to save energy
- Use calculators to estimate your savings
- View energy-saving brochures
- Learn about Focus on Energy

Interested in our energy future?
Visit mge2050.com.



GS3332 3/13/2020



Monona Grove Nursery School Toddler Time!

Games, art projects, music, stories, playtime and fun!

Toddler Time at MGNS is a fantastic way to gently introduce children 0-3 years to the preschool environment, 1 day/week without having to separate from a parent/caregiver.

Visit us at MGNS.org or Call (608) 222-4633



Programs for ages 0-5 Since 1958!

Morning & Afternoon Classes

MMSD 4K • Preschool • Toddler Time

MGNS is a State Licensed & City Accredited Parent Coop

MGNS.org

a *perfect* place to learn through *play*



Elvehjem Neighborhood Association
P.O. Box 14625
Madison, Wisconsin

ENA CALENDAR OF EVENTS

Wednesday, April 1
ENA Board Meeting
Virtual, link at theENA.org/fb

[Canceled]
Easter Egg Hunt
Droster Park

Saturday, May 2
Annual Meeting & Social/Lunch*
10 am - 12 pm at Our Saviour's Lutheran Church

Saturday, May 2 - July 4
Membership Drive**
Neighborhood Wide

Sunday, April 19
Earth Day Cleanup
Local Elvehjem Parks

Wednesday, May 6
ENA Board Meeting
7 - 9 pm at Great Dane Eastside

Wednesday, June 3
ENA Board Meeting
7 - 9 pm at Great Dane Eastside

* Latest updates at theENA.org/fb

** Online signups are live at theENA.org/join